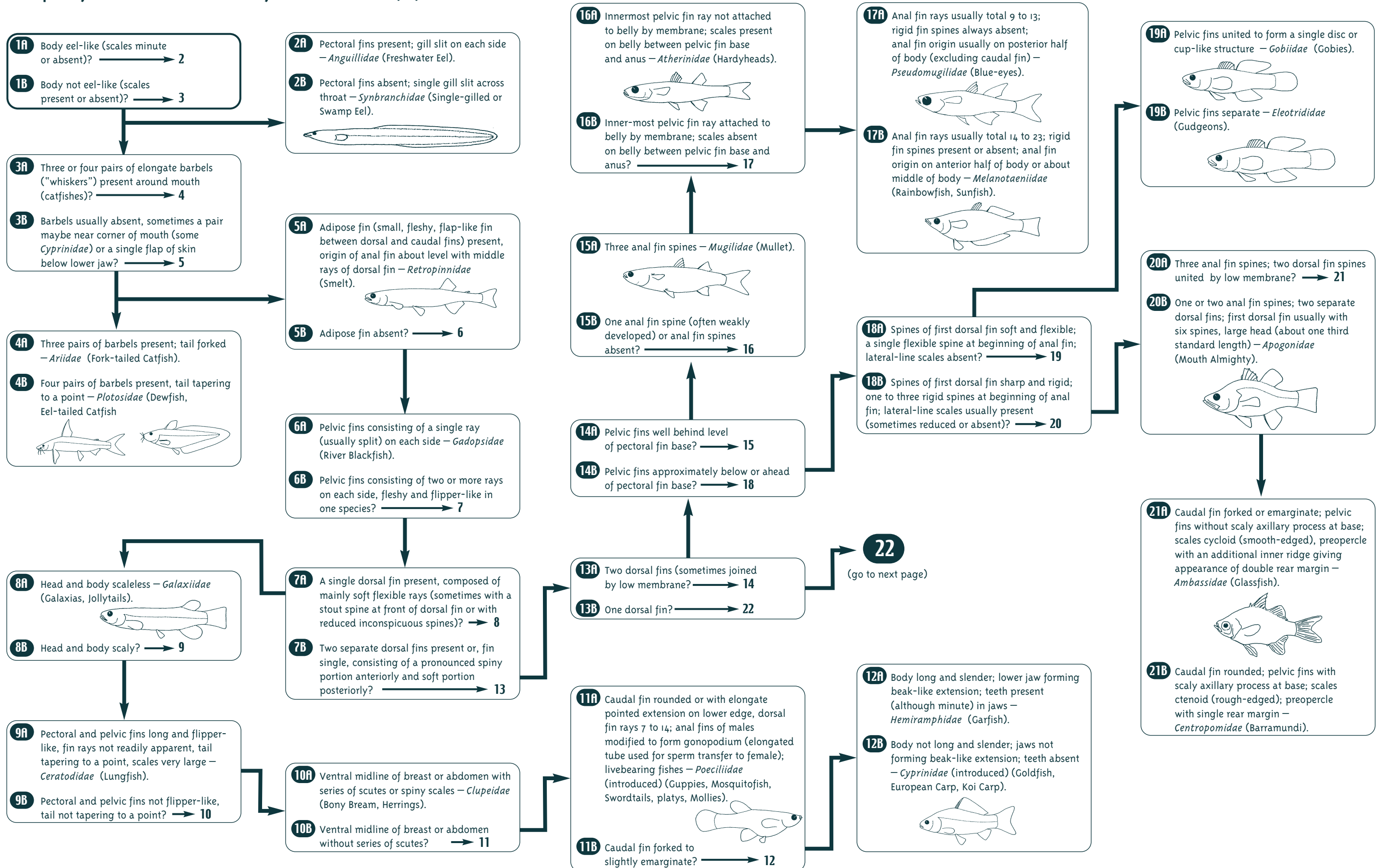


# Key to Southern Queensland families of freshwater fish

(adapted from 'Freshwater Fishes of Australia' Allen 1989)



**Further information**

Books such as *Wildlife of Greater Brisbane* provide useful information on the range of fish possibly found in South East Queensland streams, and their identification.

**Internet resources**

**FishWeb** – Queensland Fisheries online:  
[www.dpi.qld.gov.au/fishweb/](http://www.dpi.qld.gov.au/fishweb/)

**Australian Society for Fish Biology** online:  
[www.hydro.com.au/asfb/](http://www.hydro.com.au/asfb/) includes links to fishery related web sites:  
[www.hydro.com.au/asfb/sites.html](http://www.hydro.com.au/asfb/sites.html)

**Australia New Guinea Fishes Association** online:  
[www.angfa.org.au/main.htm](http://www.angfa.org.au/main.htm)

**Schools** – Care and Breeding of Australian native fish in the classroom:  
[www.ferngrovsh.qld.edu.au/science/page2.htm](http://www.ferngrovsh.qld.edu.au/science/page2.htm)

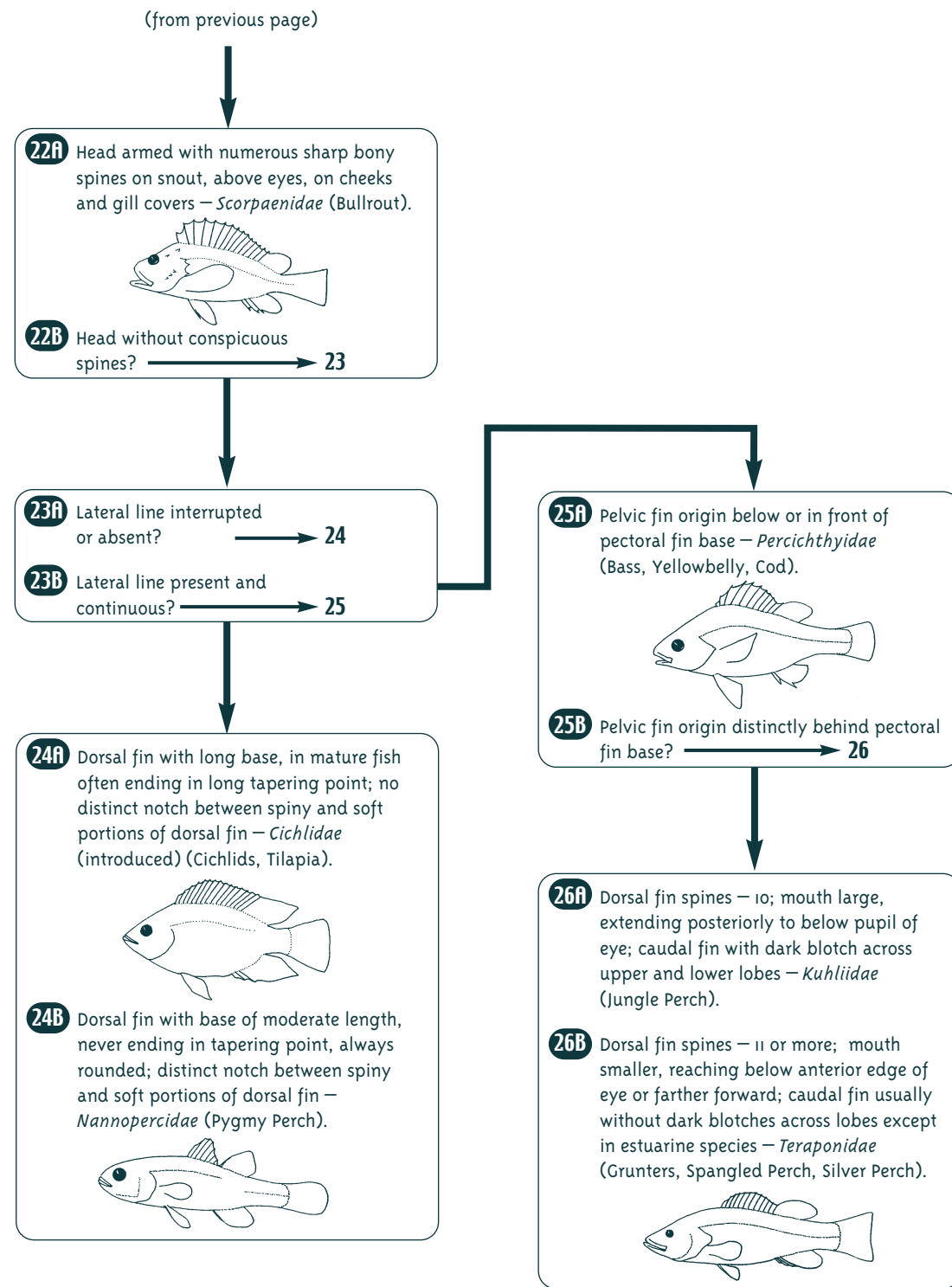
**Native Fish Australia:**  
[www.nativefish.asn.au/](http://www.nativefish.asn.au/)

**Australian Capital Territory Native Fish Information System** – information for secondary and primary students:  
[nativefish.www.act.gov.au/](http://nativefish.www.act.gov.au/)

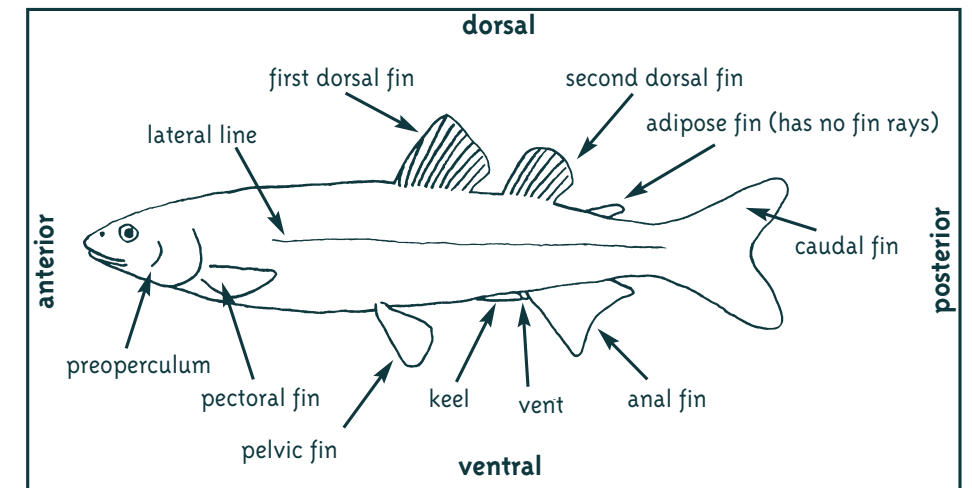
**Acknowledgements**

Produced by  
**Oxley Creek Waterwatch**  
PO Box 212  
Sherwood, Qld 4075  
email: [occa@latrate.net.au](mailto:occa@latrate.net.au)

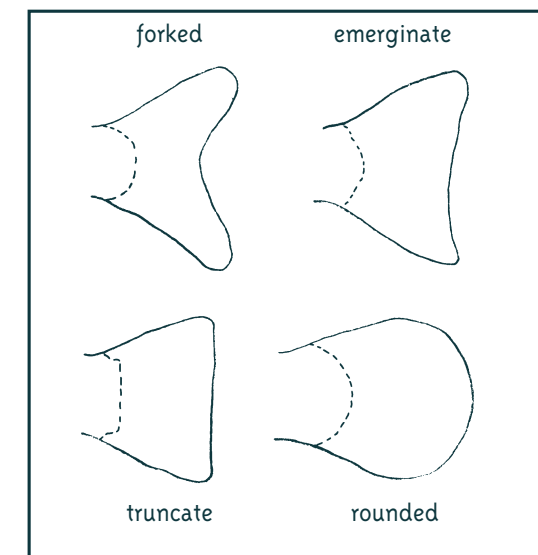
Thanks to **Queensland Museum** for assistance with preparation of this key.  
Financial assistance from the **Brisbane City Council** and the **Natural Heritage Trust**.



*A typical soft-rayed fish showing external features (after R.M. McDowall, 1986)*



*Shapes of typical fish tails*



This factsheet was produced by **Oxley Creek Waterwatch** with the assistance of **Jeff Johnson, Queensland Museum**.

It has been developed for use as a wall chart or field guide.

For information regarding fish sampling in creeks of South East Queensland, refer to *Waterwatch Fish Factsheet #1*.

